



concria™

CONCRIA™ SLIDE BLADES



NO SCRATCHES! NO BURN MARKS! BETTER SHINE!

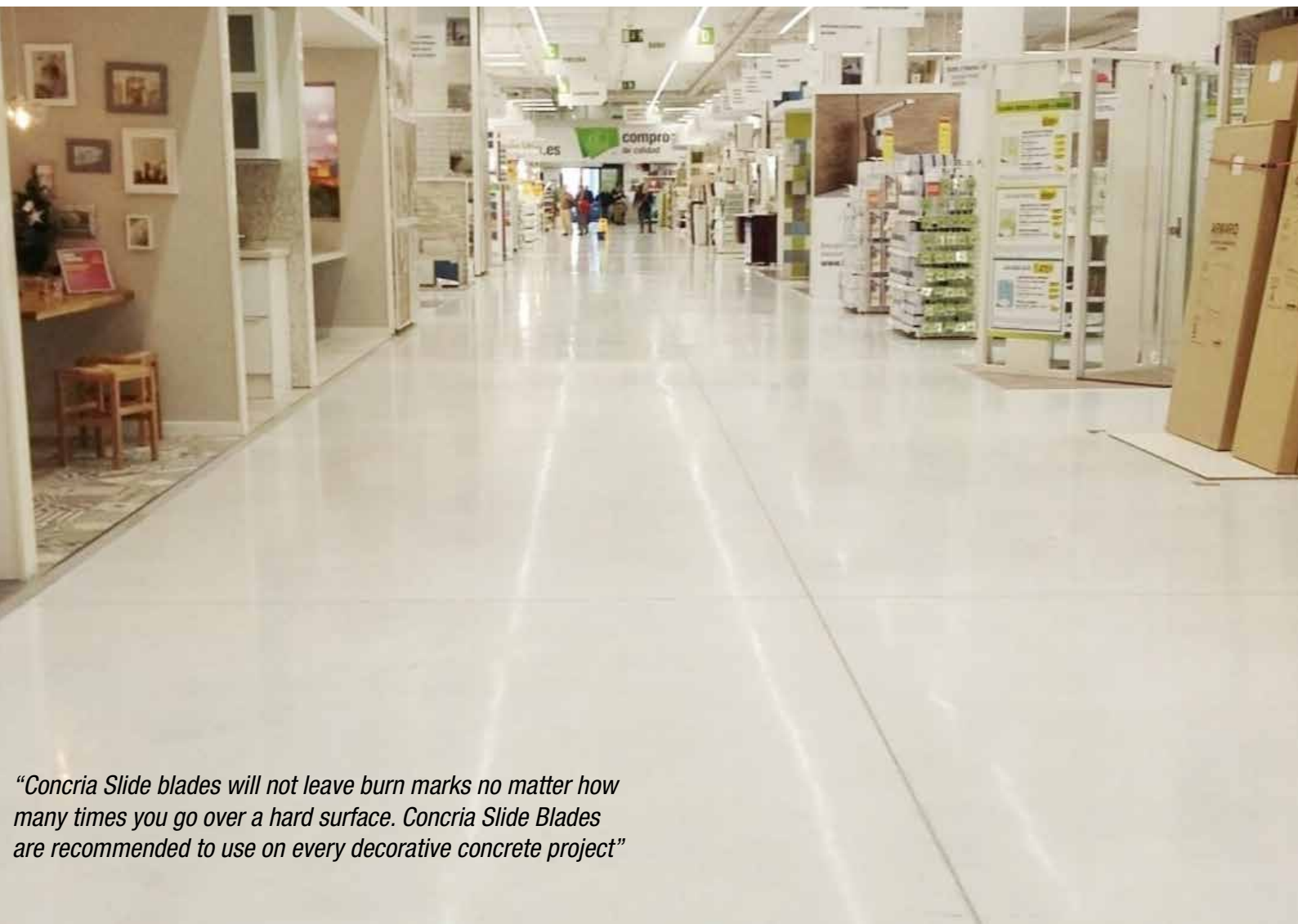
REVOLUTIONARY, PATENTED CONCRIA™ PLASTIC SLIDE BLADES

Patented Slide Blades can be easily slided on the standard 6" metal finishing blades in just seconds without any screwing.

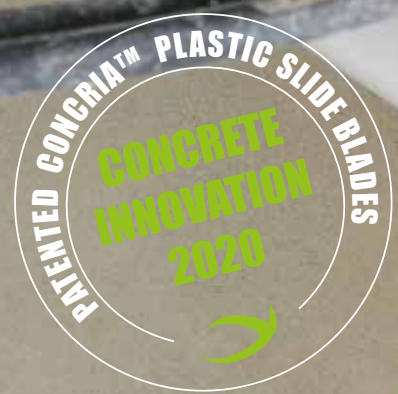
Time plays a significant role in the concrete finishing. It takes 30-60 minutes to change standard blades, but Slide Blades can be changed in just few seconds.

Longevity, quick to change and better price per square foot equalizes to the Slide Blades becoming an everyday finishing blade. Slide Blades consumption is 10,000sqft-50,000sqft depending do you use on every stage of finishing or just for the final passes.

Plastic or teflon blades have specified for long time for all decorative concrete projects such as stain, dye, shake on, integral pigments, polished etc. Burnished steel trowel finish increases the potential for mottling and difficulty in uniformly polishing the slab. Slide Blades totally eliminates the risk of leaving dark burnish marks while power troweling concrete or dry shake hardener floors.



“Concra Slide blades will not leave burn marks no matter how many times you go over a hard surface. Concra Slide Blades are recommended to use on every decorative concrete project”



15 MM THICK PLASTIC BLADE

15mm thick Plastic Blades are made of hardest quality plastic and provide outstanding wear resistance, very low coefficient of friction, and exceptional temperature and impact properties. Concria Slide Blades provides as hard and glossy finish than standard metal finishing blades.

SLIDE IN AND OUT IN SECONDS



BENEFITS

- No burn marks
- Better shine
- No scratches
- Use on every stage of finishing or change quickly under trowel for final passes to eliminate burn marks
- Produce a really uniform and aesthetic surface
- Provide perfect finishing for polished concrete or color hardener project
- High wear resistance, in most cases last longer than steel blades
- Minimize plastic shrinkage
- Much stiffer than poly and regular plastic blades
- Maximum thickness 15 mm/0,6 inch
- Very low coefficient of friction
- Provides same hard finish as metal blades
- Available in finish blade style
- Can be use used on walk-behind and ride-on power trowels



concria™

Contact Concra Sales

See our local distributors at
concria.com/contact

www.concria.com